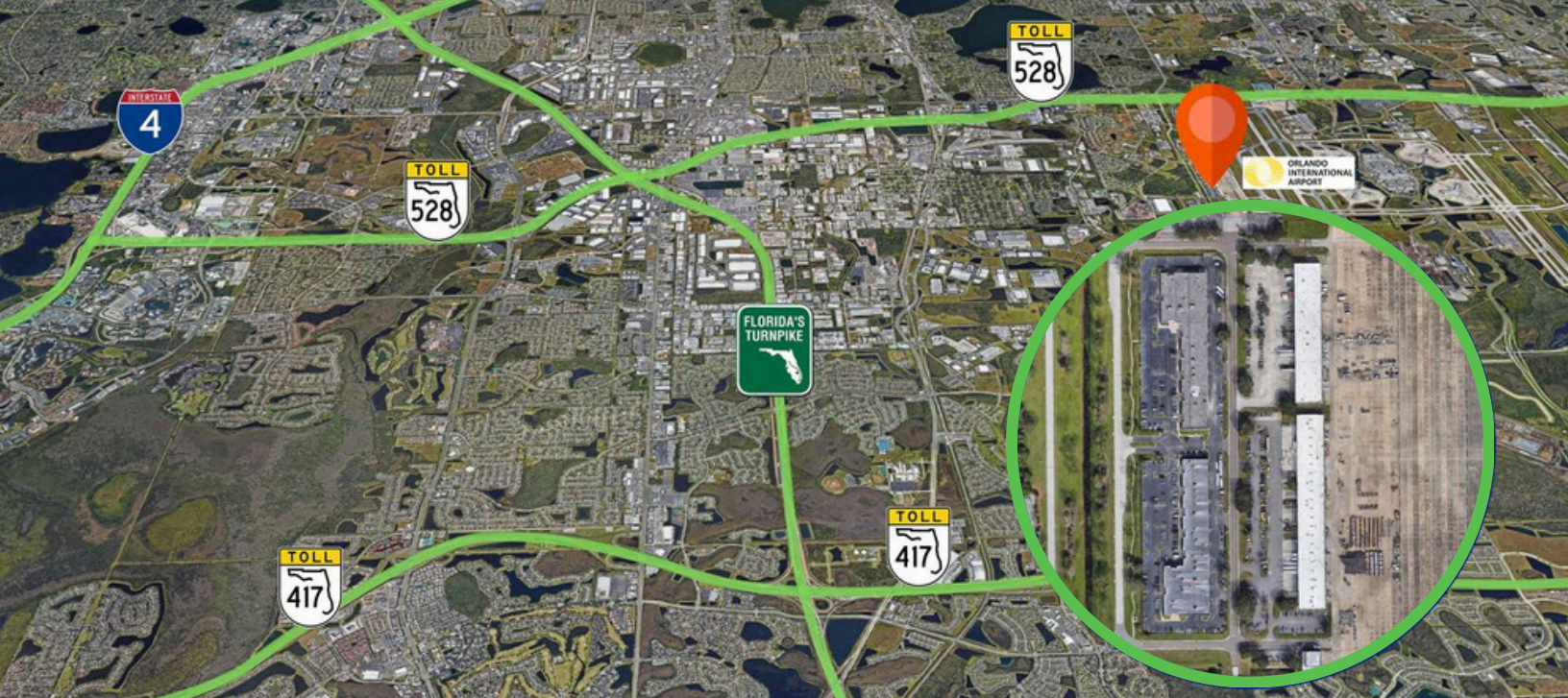


**FOR
LEASE**



**Availability from 2,094 SF to 29,000 SF
9403, 9425, 9427 & 9677 TRADEPORT DRIVE
ORLANDO, FL 32827**





GENERAL INFORMATION

Building located in Free Trade Zone on Orlando International Airport Property (GOAA)

Two Buildings 55,555 sf each

Loading: Grade Level

Clear Height: 18'

PRIME LOCATION

Located on airport property with outstanding access to the:

- Turnpike
- SR 528 and SR 417

FINANCIAL INFO

Rental Rate: From \$14.95 psf

Opex: \$2.75

NORTH BUILDING

Suite 9403: 25,095 sf in shell condition

Min. Contiguous: 12,000 sf

Suite 9425: 3,998 sf 100% office

Suite 9427: 2,094 sf 696 sf of warehouse

SOUTH BUILDING

Suite 9677: 29,093 sf of which 859 is unairconditioned warehouse

Min. divisible: Approximately 10,000 SF

SHER TOLAN, SIOR

407-810-2291

stolan@allied-comm.com

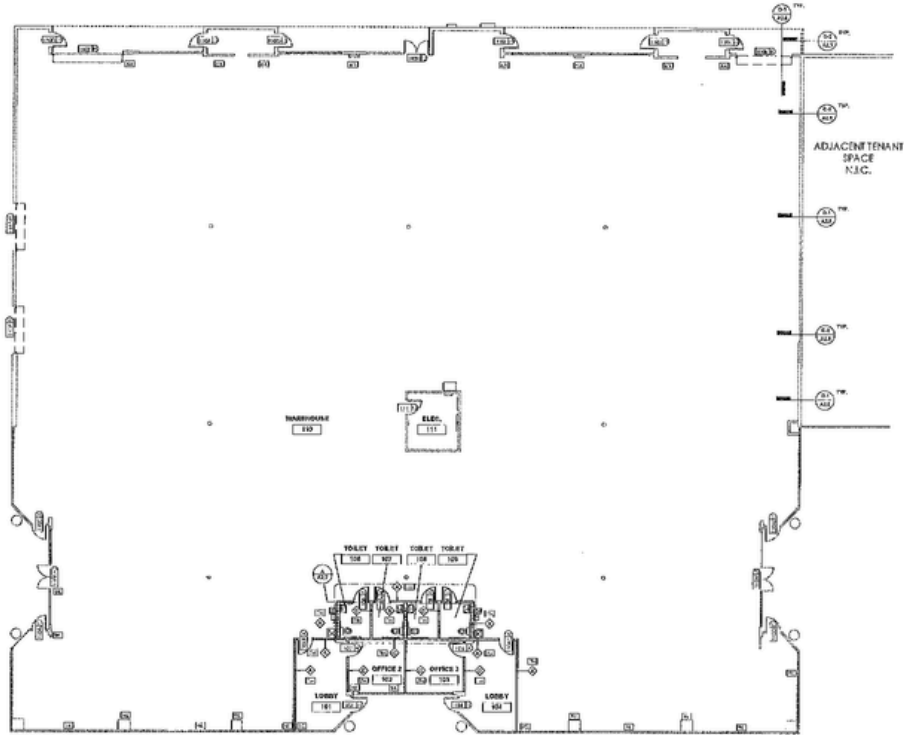
5401 S Kirkman Rd. Suite

310 Orlando, FL 32819

www.allied-comm.com

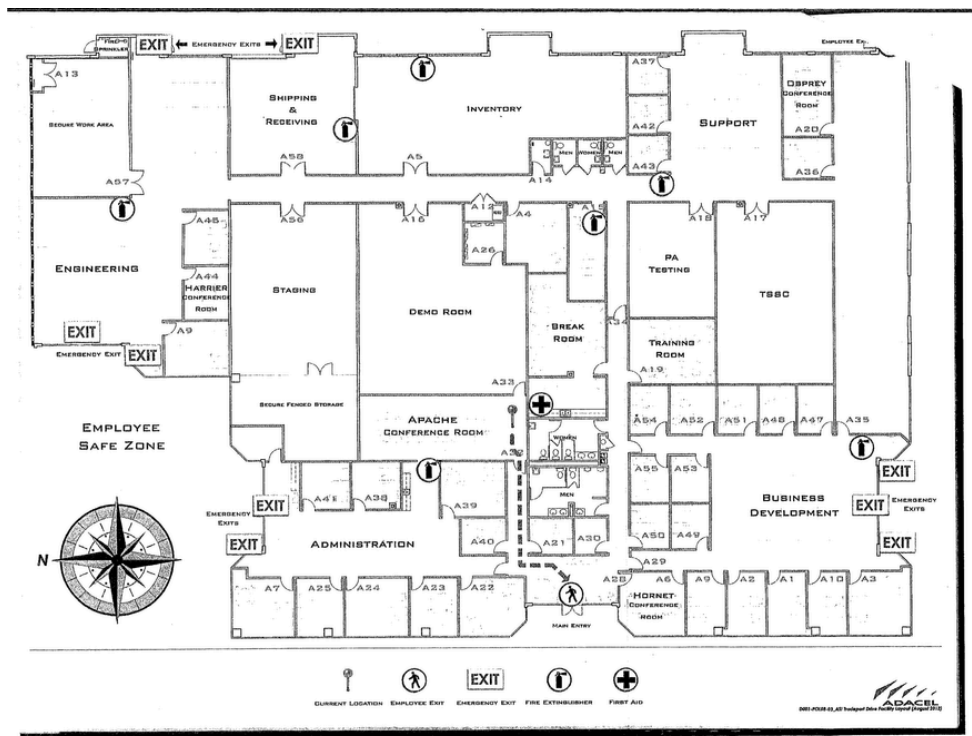


SUITE 9403
 25,095 SF
 B-T-S Office



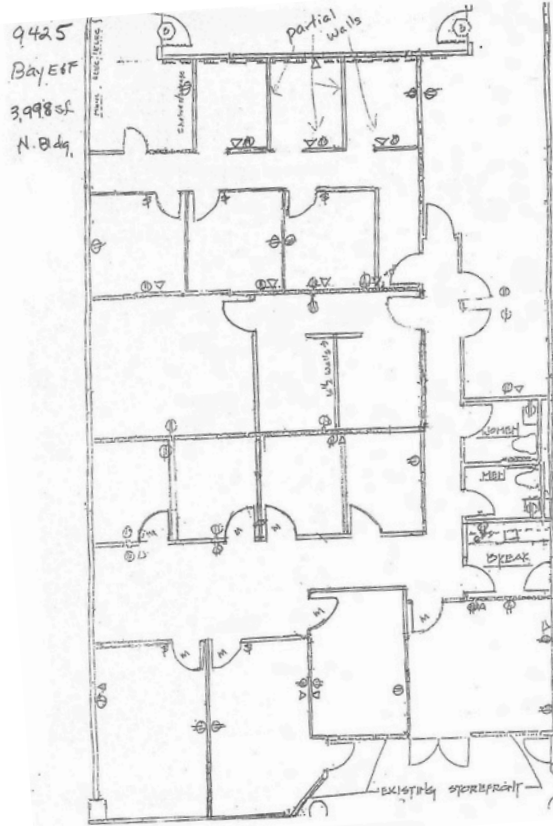
SUITE 9677

29,093 SF
 859 SF non-AC Warehouse



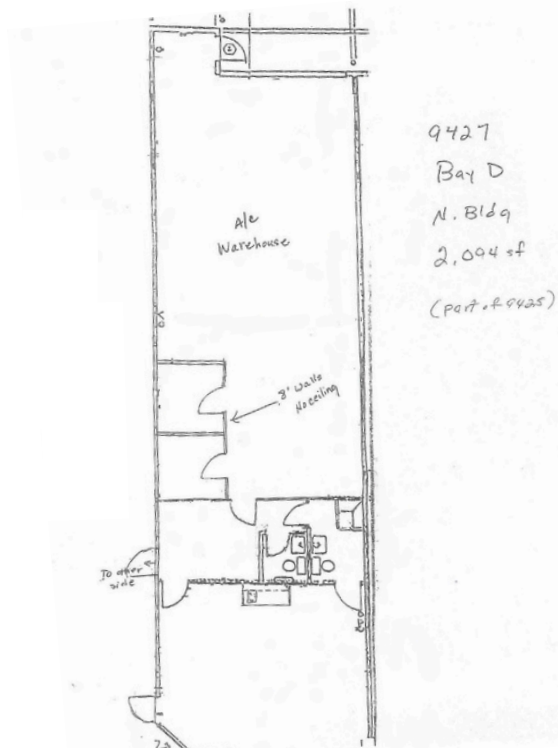
SUITE 9425

3,998 SF

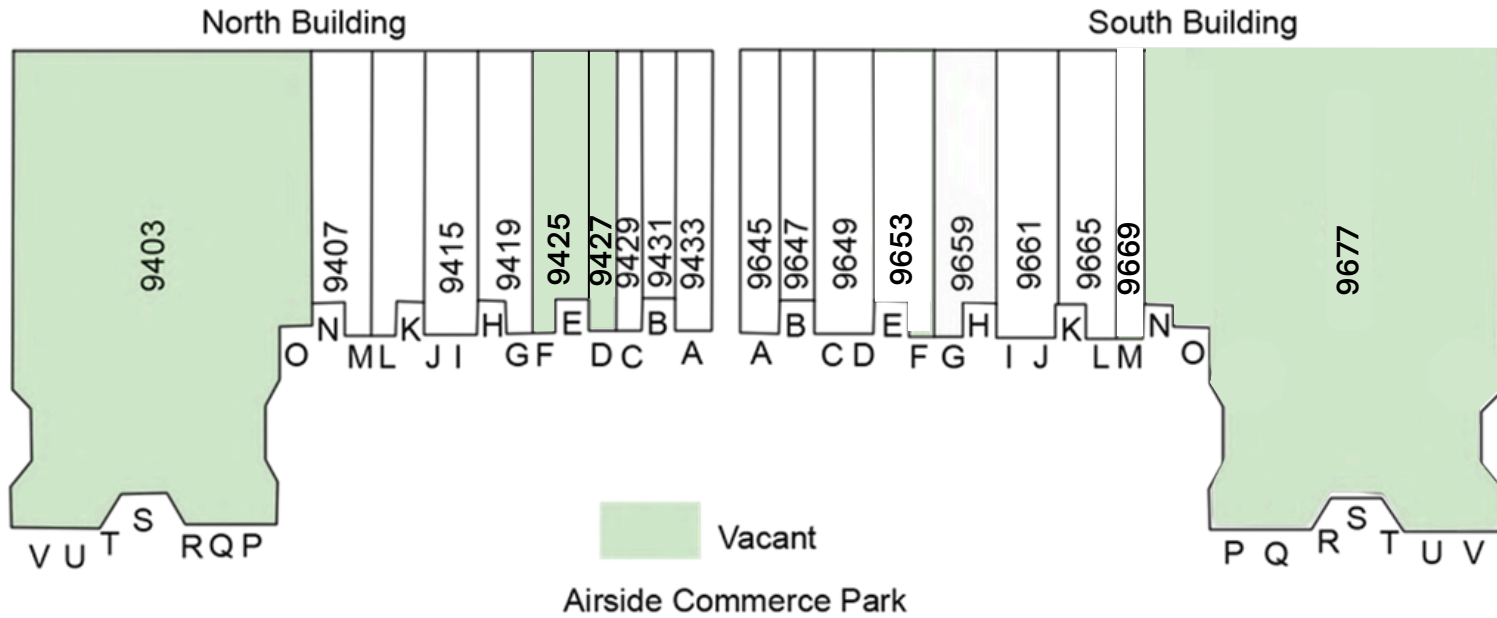


SUITE 9427

2,094 SF



Airside Commerce Park



This information has been obtained from sources believed reliable, but has not been verified for accuracy or completeness. You should conduct a careful, independent investigation of the property and verify all information. Any reliance on this information is solely at your own risk. Allied Commercial and the Allied Commercial logo are service marks of Allied Commercial Advisors, LLC. All other marks displayed on this document are the property of their respective owners. Photos herein are the property of their respective owners. Use of these images without the express written consent of the owner is prohibited.

SHER TOLAN, SIOR

407-810-2291

stolan@allied-comm.com

5401 S Kirkman Rd. Suite 310

Orlando, FL 32819

www.allied-comm.com

