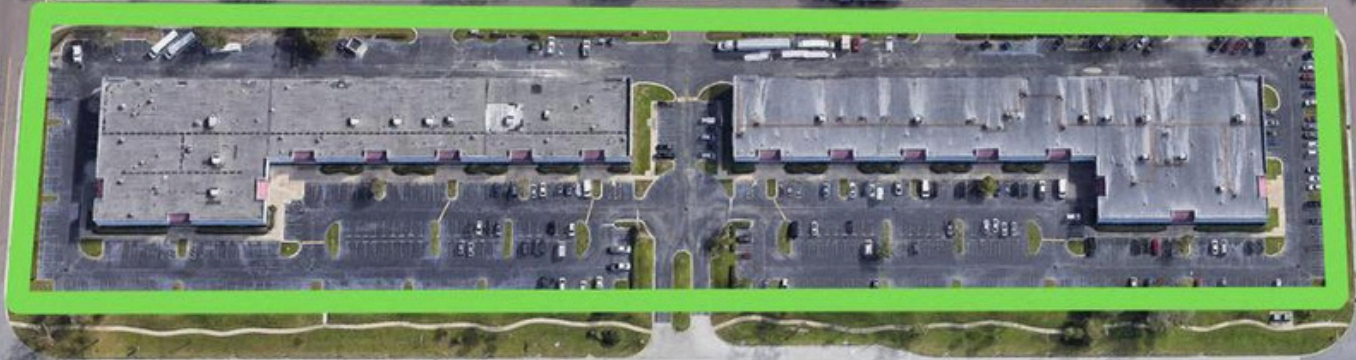
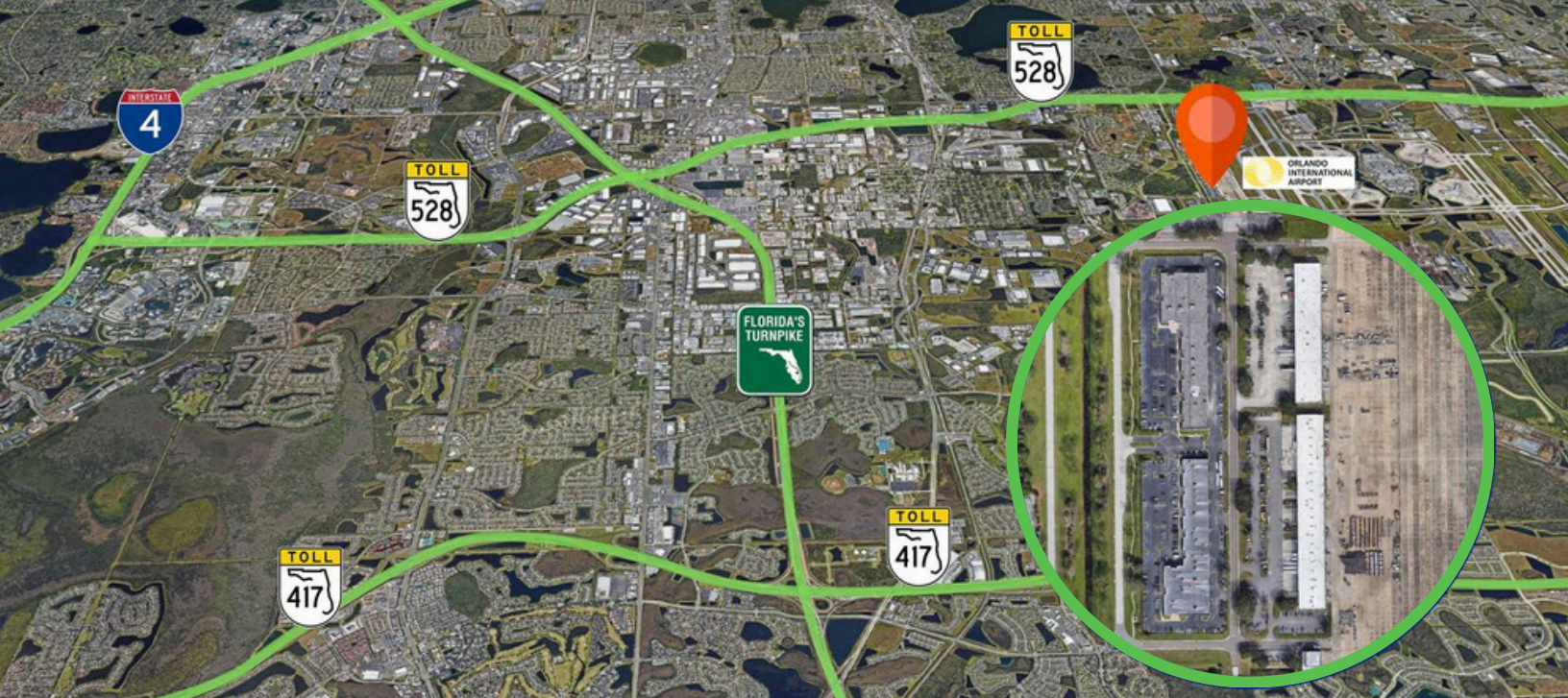


**FOR
LEASE**



Availability from 12,500 SF to 29,000 SF
9403 & 9677 TRADEPORT DR.
ORLANDO, FL 32827





GENERAL INFORMATION

Building located in Free Trade Zone on Orlando International Airport Property (GOAA)

Two Buildings 55,555 sf each

Loading: Grade Level

Clear Height: 18'

PRIME LOCATION

Located on airport property with outstanding access to the:

- Turnpike
- SR 528 and SR 417

NORTH BUILDING

Suite 9403: 25,095 sf in shell condition

Min. Contiguous: 12,000 sf

Rental Rate: From \$14.95 psf

Opex: \$2.75

SOUTH BUILDING

Suite 9677: 29,093 sf of which 859 is unairconditioned warehouse

Rate: From \$14.95 psf plus \$2.75 in opex

Min. divisible: Approximately 10,000 SF

SHER TOLAN, SIOR

407-810-2291

stolan@allied-comm.com

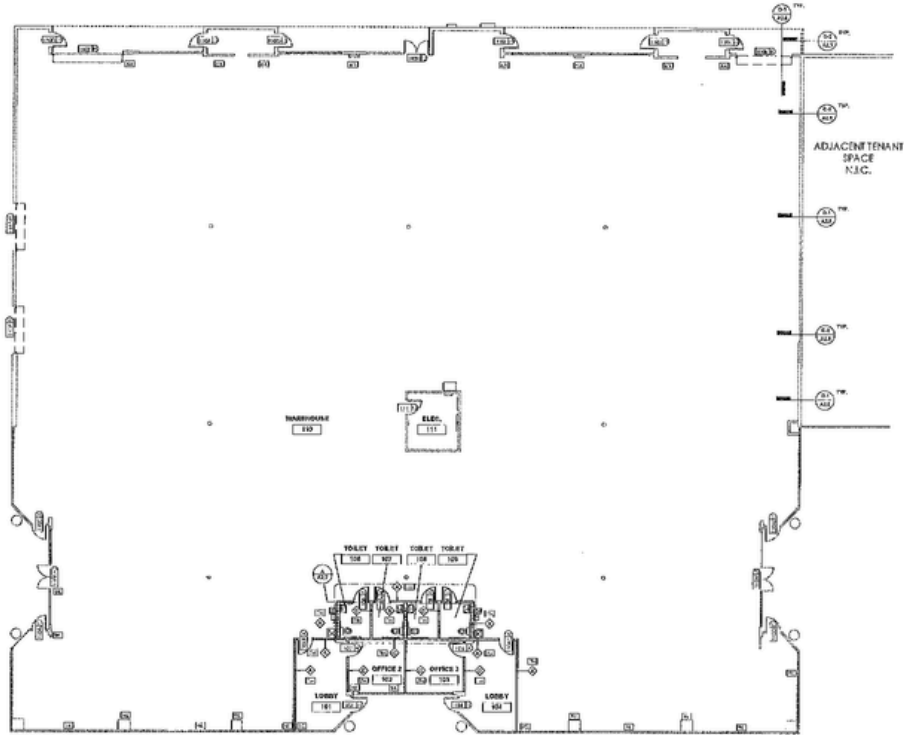
5401 S Kirkman Rd. Suite

310 Orlando, FL 32819

www.allied-comm.com

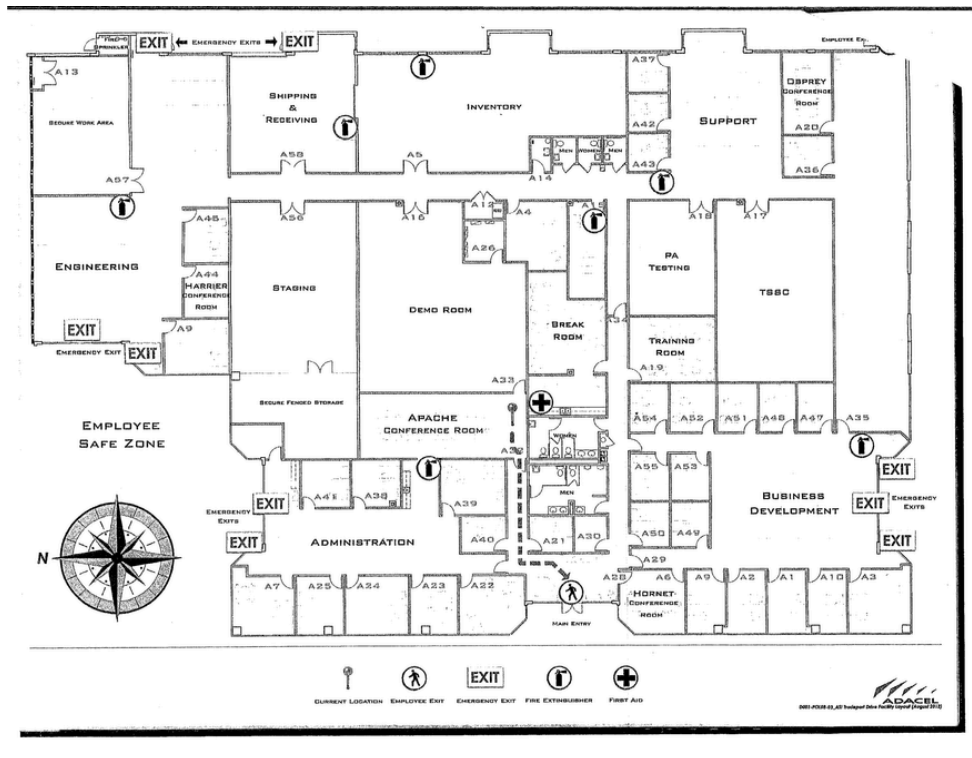


SUITE 9403
 25,095 SF
 B-T-S Office

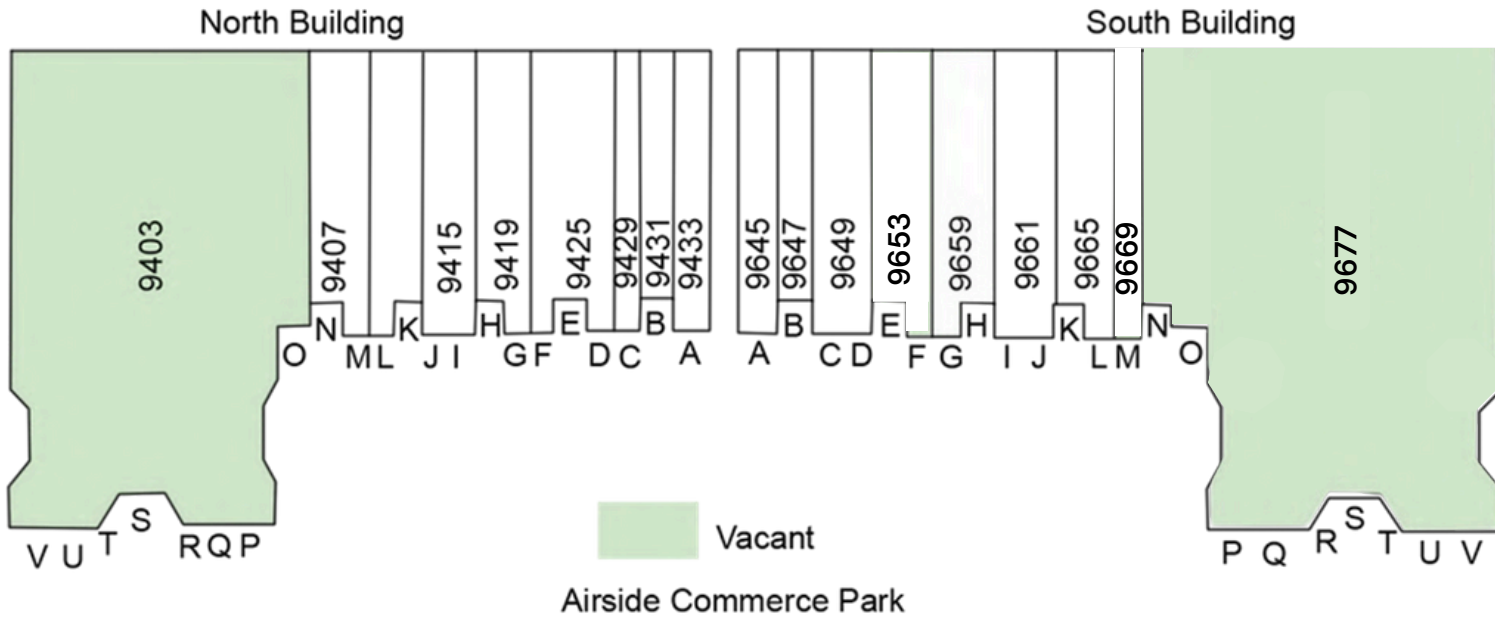


SUITE 9677

29,093 SF
 859 SF non-AC Warehouse



Airside Commerce Park



This information has been obtained from sources believed reliable, but has not been verified for accuracy or completeness. You should conduct a careful, independent investigation of the property and verify all information. Any reliance on this information is solely at your own risk. Allied Commercial and the Allied Commercial logo are service marks of Allied Commercial Partners, LLC. All other marks displayed on this document are the property of their respective owners. Photos herein are the property of their respective owners. Use of these images without the express written consent of the owner is prohibited.

SHER TOLAN, SIOR

407-810-2291
 stolan@allied-comm.com
 5401 S Kirkman Rd. Suite 310
 Orlando, FL 32819
 www.allied-comm.com

